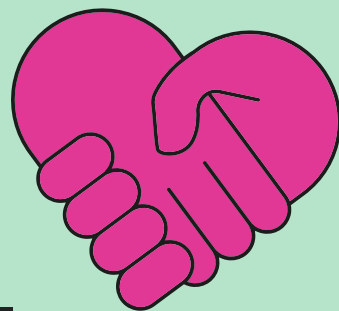


Considering a
Career in

BE MORE

Health & Social



Improving lives through
care and innovation



Health & Social Contents

- 3 What is Health & Social?
- 4 **Stats & Facts:** Did you know?
- 6 What are the career pathways & job roles?
- 8 **Health & Social:** Job Roles
- 10 **Getting Into:** Health & Social
- 11 Test Your Knowledge





What is Health & Social?



The health and social care sector supports the physical, mental, and social well-being of local communities through face-to-face interaction with patients or ground-breaking health research.



The sector thrives in the Liverpool City Region, where health and life sciences innovation paves the way for better health and social care. Meanwhile, care workers, medical professionals, administrative staff and other support teams collaborate to meet the medical and social welfare needs of individuals and groups in the community.

Health and social care could lead you to work in many unexpected professional settings and roles, from making home visits as an adult care worker or taking X-rays as a hospital radiographer to helping run a youth club or booking patient appointments as a GP receptionist.

Proactive health & social care professional communities can be found in our region's universities and many NHS hospitals, offering skills development and learning opportunities at every stage of your career.

Whether you're making prosthetic limbs to enable a patient to walk again, counselling a struggling teenager, working as a nurse or paramedic, or taking photographs to help diagnose patients as a clinical photographer, working in health & social care means saving and improving lives daily.

Stats & Facts

Did you know?

Health & social care in the Liverpool City Region: Stats & Facts

- Liverpool City Region is a UK government Health and Life Sciences Innovation Zone.
- The Liverpool School of Tropical Medicine is the UK centre for tropical and infections prevention and control.
- The Royal College of Physicians' (RCP) northern headquarters is located in Liverpool, England.
- The region is home to one of Europe's largest pharmaceutical clusters.

Health & social care in action in the Liverpool City Region

- Liverpool University will lead the Civic HealthTech Innovation Zone (CHI-Zone), funded with £10m from the Liverpool City Region to provide jobs in research and deliver revolutionary health and social care technology.
- Liverpool's Life Sciences Investment Zone will generate an estimated 8,000 jobs over 10 years, transforming the whole region into a hub of innovation in health and social care. This includes projects for mental health, vaccine production, and utilising artificial intelligence in the sector to prevent and treat illness.
- After the publication of a report on Liverpool's state of health in 2024, Liverpool City Council launched the £900k Community Champions Public Health programme, sharing funds between several successful organisations to tackle health and social issues in the region's local communities.
- Each of the six local authorities in the Liverpool City Region has its own dedicated health and social care pages and schemes available online, including projects such as Knowsley's A Good Life and the Sefton Partnership.
- The Cheshire and Merseyside Training Hub offers local skills development and clinical training opportunities across different specialisms in the health and social care sector.
- Housing association Prima Group is teaming up with Fusion 21, a Knowsley-based social business, to combine social housing data with NHS healthcare records to better prevent common diseases. This could potentially lead to an exciting new area of research in understanding the connection between living situations and overall health.





Health & Social: Good to know

Where does health & social care work take place?

Health and social care work doesn't just happen in hospitals. Depending on their roles, employees in the sector could work in many different environments, such as research laboratories, GP practices, residential care homes, community support centres, administration offices, supported housing, and people's homes.

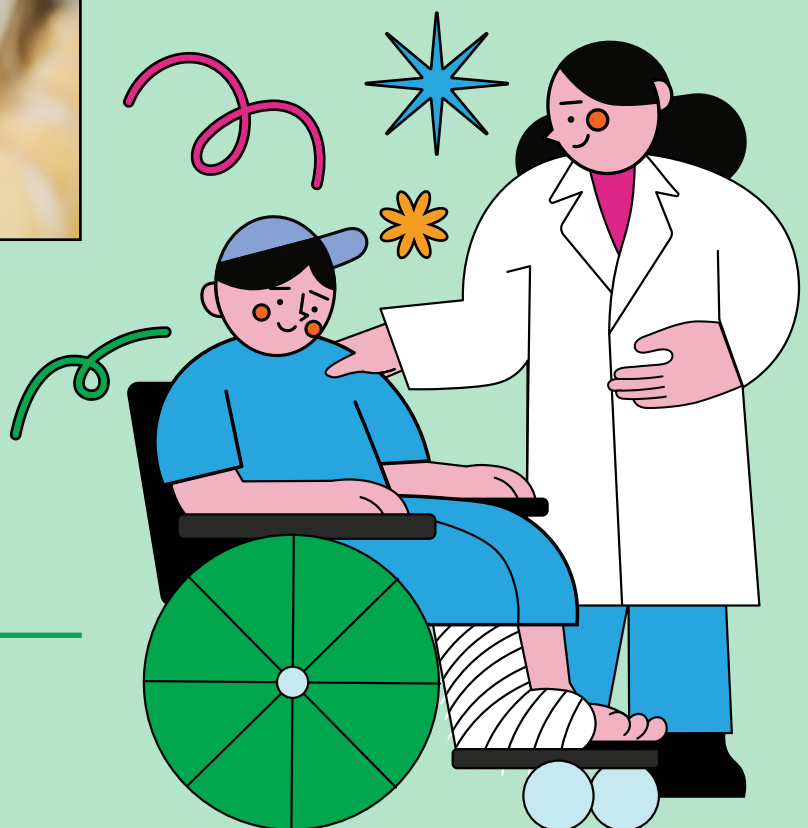
What is the role of mental health support in the health & social care sector?

Over the last few decades, more people have been reporting mental health difficulties, meaning highly-trained mental health professionals, as well as community and social workers, are needed to tackle these challenges. The rise in mental health reporting has also led to increased research opportunities in related scientific and social fields, including neuroscience and psychology.



Health and Social Care /definition/

the research of and care for an individual or group to prevent, treat and tackle physical, mental, and social issues.



What are the Career Pathways & Job Roles?



Health & Social career pathways

In an entry-level job such as adult care worker, community wellbeing worker, or GP assistant, you can develop your customer care and communication skills and learn practical or administrative skills to support patients.

In a mid-level role, you could learn to support people with a broader range of physical and mental health difficulties as a counsellor or community sports coach. If you choose to undertake further study, you could work in research-based roles as a healthcare science associate or clinical data manager.

With advanced study and experience in the health & social care sector, you could work in higher-level roles such as sonographer or occupational therapist.



The Royal College of Physicians' (RCP) northern headquarters is located in Liverpool, England.



Health & Social Job Roles

There are hundreds of different job roles in health & social.
Here's just a sample:

Position	Role & tasks	Salary
Ambulance support worker	Transports patients in the ambulance, offering support to paramedic staff. Helps patients in and out of the vehicle and homes, ensuring they are comfortable and calm. Uses radio technology to communicate clearly with colleagues.	Up to £26,000
Lead adult care practitioner	Plans and reviews patient care schedules. Fills in medication records carefully and informs family members of patients' progress. Supervises less senior care workers with leadership and management skills, offering support and guidance to trainees.	Up to £29,000
Dental nurse	Keeps equipment clean and areas tidy, assisting dentists during appointments. Uses machinery to remove water from patients' mouths during treatment. Completes records about patients, making sure all information is up to date and correct.	Up to £31,000
Early intervention practitioner	Advises people with substance misuse problems, including drug and alcohol addictions, and encourages them to seek help from relevant local services and trained professionals. Listens and communicates with vulnerable people to help them battle addictions.	Up to £35,000
Clinical photographer	Works in the medical illustration department, producing photographs, videos, and drawn images for the health & social care settings. Works closely with medical staff or face-to-face with patients to produce accurate imagery using specialist equipment.	Up to £45,000



Earn up to
£75,000
per year

Position	Role & tasks	Salary
Social worker	Helps families, adults, and young people with social problems, including independent living, addiction, childcare, and family support. Meets with clients and creates progress plans tailored to their unique situations. Keeps detailed records of appointments and patients.	Up to £48,000
Speech and language therapist	Performs assessments on patients to identify specific difficulties. Develops and carries out therapy plans with research-backed approaches, helping people with language delays or people who have to re-learn to speak after a brain injury.	Up to £53,000
Prosthetist and Orthotist	Assesses patients' needs and measurements before prosthetic limbs are made, communicating with other departments to develop a physiotherapy plan for the patient to begin using their prosthetic/orthotic device. Provides emotional support to patients and encourages them to raise any issues with the comfort of the new device.	Up to £53,000
Audiologist	Tests clients' hearing using official tests, fitting hearing aids where necessary. Tests and repairs hearing devices when needed. Keeps customer records accurate and up to date with an online database.	Up to £65,000
General Practitioner (GP)	Works as a doctor, diagnosing general health problems and making referrals in cases where specialist knowledge is required. Prescribes medicines and treatments to patients based on diagnoses. Communicates effectively with the public and other healthcare professionals.	Up to £75,000



Getting into Health & Social

At entry-level

You can train for an entry-level position with a T-level for a specialist role such as adult care practitioner or peer worker. If you want to progress while on the job, you could complete a level 2 or 3 apprenticeship, leading to roles such as prosthetics and orthotic technician or clinical coder.

At mid-level

For mid-level positions, you could take a higher technical qualification (HTQ) and become an early intervention practitioner or dental technician. You could also gain specialist skills and knowledge through a foundation degree in a health and social care subject, such as social work or optometry.

At senior level

For roles where you will need highly specialised knowledge to help with physical and mental wellbeing, such as midwife or art therapist, you will usually need a university degree in the relevant area of science. Another option is a degree apprenticeship, where you could receive high-level skills training to become a public health practitioner.

Subjects to study at school & beyond

- ICT
- Maths
- Nutrition
- Psychology
- Sciences
- Social care
- Sociology

Core skills and knowledge to build

- Administration
- Attention to detail
- Communication
- Empathy
- Health and safety
- Management and leadership skills
- Problem-solving
- Wellbeing support

Test Your Knowledge

(Answers on back page)



Q1. What is health and social care?

- A.** Only the prevention of illnesses
- B.** Just the research of mental and physical health conditions
- C.** The sector that looks after people's physical, mental, and social wellbeing
- D.** A term to describe solely the people who work in hospitals

Q2. Which of the following settings are health & social care work settings? (Choose as many as you wish)

- Hospital
- Community centre
- Office
- Home

Q3. There are approximately 18,000 adult social care roles in the Liverpool City Region. True or false?

Q4. How many GP practices are there in the area?

Q5. Which two companies are working on a project that unites social housing and health data?

- A.** Prima Group
- B.** Lyva Labs
- C.** AstraZeneca
- D.** Fusion 21

Q6. Which of the following are job roles in health & social care? (Tick as many as you wish)

- Primary teacher
- Clinical photographer
- Social worker
- Ambulance support worker

Q7. Give an example of an apprenticeship or training course that could prepare someone for a health & social care role.

Q8. What skills are necessary for health & social care? Name three.

Q9. What is the importance of mental health support in the sector?

- A.** It is a service that will be downsized in the next few years
- B.** It drives demand for skilled mental health specialists and researchers
- C.** It's the only thing that the sector does
- D.** Mental health support is not very important

Q10. ____% of the total workforce in the Liverpool City Region work in health & social care.

Quiz Answers
Q1. C
Q2. All
Q3. True
Q4. 86
Q5. A, D
Q6. Clinical photographer, social worker, ambulance support worker
Q7. Level 2 or 3 apprenticeship, such as prosthetics and orthotic technician or clinical coder, or a foundation degree in a related subject like social work or optometry.
Q8. Communication, empathy, attention to detail (or any other from the brochure content).
Q9. B
Q10. 18.6